

# Griffith Regional Theatre

## *Theatre*

### **Technical Specifications**

Updated  
2025

**Technical Manager: John Matkovic**

Phone number: 02 6962 8454  
Mobile Number: 0414 930 704  
Fax number: 02 6962 8448  
Email address: john.matkovic@griffith.nsw.gov.au

**Venue:**

Phone number: 02 6962 8444  
Fax number: 02 6962 8448  
Website: [www.griffith.nsw.gov.au/theatre](http://www.griffith.nsw.gov.au/theatre)

**STAGE****Brief Stage Description:**

Unraked stage with a proscenium arch and flying facilities. Hardwood floor covered with Masonite sheets. Screwing into surface permitted but larger holes to be authorised by Technical Manager. Stage crossover behind US fly line.

Stage distributed load limit : **Distributed load = 750kg/m<sup>2</sup> (7.5Kpa)**  
 Stage point load limit : **Point load = 450kg (4.5KN)**

Stage rake **Nil**

**Stage Dimensions:****Proscenium**

Width **12 metres**  
 Height **5 metres**

**Setting Line** **200mm upstage of the rear of proscenium (*allows for fire curtain*)**

**Distance From** (*SL = Setting Line, CL = Centre Line*)

SL to Downstage edge of apron	<b>1250mm</b>
SL to Downstage edge of Orchestra Pit stage cover	<b>3300mm</b>
SL to first fly line	<b>360mm</b>
SL to last upstage fly line / Cyclorama	<b>7535mm</b>
SL to rear wall	<b>12800mm</b>
CL to OP wall (or obstruction)	<b>9200mm</b>
CL to PS wall (or obstruction)	<b>15600mm</b>
Stage floor to underside of grid	<b>13000mm</b>
OP Pros onstage edge to Fly Wall	<b>4200mm</b>
OP Pros onstage edge to Fly Rail	<b>3300mm</b>
OP Gallery to Pros onstage edge	<b>1800mm</b>
OP Gallery Height	<b>6300mm</b>
P Pros onstage edge to Loading Dock Wall	<b>9700mm</b>
P Pros onstage edge to Exit Door	<b>8000mm</b>
Prompt Gallery to Pros onstage edge	<b>1500mm</b>
Prompt Gallery Height	<b>7300mm</b>
Downstage edge to Cinema Screen	<b>4500mm</b>
Downstage edge to White Cyclorama	<b>10800mm</b>

### Overhead obstructions

**Cinema Screen**, Line 7, 1260 mm from setting line. Lower hard edge is at a height of 6300mm at its fully flown position; it has soft black masking that hangs below that at 5900mm at fully flown position.

**Scenic Curtain**, Line 37, 6210mm from setting line, 7000mm at fully flown position to its bottom edge.

### Auditorium:

#### **Auditorium consists of stalls with stadium style seating**

Seating capacity with additional  
Orchestra lift/pit seating installed      **523**

Seating capacity without  
Orchestra lift/pit seating installed      **523**

### Orchestra Lift / Pit:

#### **Orchestra Pit**

The Orchestra pit is covered with fixed floor sections that require two crew to remove.

**Please note** that the orchestra pit also serves as the return air ventilation duct for the auditorium air conditioning, high drafts are present during the use of air conditioning. Also at this time there is no load limit information on the orchestra pit cover fixed floor sections and its construction, heavy point loads are not permitted on this surface. Floor covering is carpet.

Dimensions of the orchestra pit      **Usable area for an orchestra is 11 x 4m.**

Orchestra pit maximum capacity      **30 musicians**

### Flying Facilities:

#### **Fly System**

The fly system is a single purchase handline system.

#### **Fly System Details**

Operating Position	<b>OP @ Stage level</b>
Total number of Lines	<b>31</b>
Panorama Lines	<b>Panorama lines are dead hung off fly galleries</b>
Batten Drift	<b>12500mm</b>
Batten Type	<b>48mm O/D pipe</b>
Batten Length	<b>14400mm</b>
Batten Extensions	<b>NIL</b>
Batten Pick-ups	<b>5 Pick-ups, 1 @ centre then others at 3.2m intervals</b>
Batten Point Load	<b>70kg</b>
Batten W.L.L.	<b>500kg</b>
Cradle Capacity	<b>500kg</b>
LX bars can be swung	<b>Yes</b>
Fly bars can be swung	<b>No</b>

## SEE HANGING PLOT FOR LINE ALLOCATIONS AND FURTHER INFO

Hanging Plot:SL: Setting Line as indicated previouslyLine Type: **SP** = Single purchase, **DP** = Double purchase, **MW** = Motor Winch, **HW** = Hand Winch, **HL** = HandlineW.L.L.: Maximum distributed load including bar weight

Line #	Distance from SL	Line Type	W.L.L	Venue Allocation	Intended Use (hiring company use)
1	360mm	SP	500kg	House Curtain	
2	510mm	SP	500kg	Legs	
3	660mm	SP	500kg	LX1	
4	810mm	SP	500kg		
5	960mm	SP	500kg		
7	1260MM	SP	500kg	Cinema Screen	Not Removable
8	1410mm	SP	500kg	Border	
9	1560mm	SP	500kg		
12	2010mm	SP	500kg	Legs	
13	2160mm	SP	500kg	LX2	
15	2710mm	SP	500kg	JBL Monitors/Work LX	Can Relocate
17	3010mm	SP	500kg		
18	3160mm	SP	500kg		
19	3310MM	SP	500kg	Border	
21	3610mm	SP	500kg		
22	3760mm	SP	500kg	Legs	
23	3910mm	SP	500kg	LX3	
27	4520mm	SP	500kg		
28	4665mm	SP	500kg		
29	4800mm	SP	500kg	Border	
32	5430mm	SP	500kg	Legs	
33	5580mm	SP	500kg	LX4	
34	5730mm	SP	500kg		
37	6210mm	SP	500kg	Scenic Curtain	Not Removable
38	6340mm	SP	500kg	Border	
40	6650mm	SP	500kg	LX5	
41	6800mm	SP	500kg	Legs	
42	6945mm	SP	500kg		
43	7085mm	SP	500kg		
44	7235mm	SP	500kg		
45	7535mm	SP	500kg	Cyclorama	

Drapery:

*Type	Material	Colour	Width	Height	Quantity
House Curtain	Velvet	Dark Red	12500mm	5500mm	1
Borders	Wool Flat	Black	14000mm	3000mm	5
Borders	Wool Flat	Black	12000mm	1000mm	2
Legs	Wool Flat	Black	1100mm	6000mm	10
Tabs / Smother	Wool Flat	Black	7000mm	5500mm	2
Cyclorama	White Filled Cloth	White	12000mm	7000mm	1
Tabs / Smother	Velvet	Black	6000mm	6000m	2

Access Equipment:

**Elevated Work Platform**

JLG MVL20 Mobile Vertical Lift

Platform Height: 5.94mtr

Working Height: 7.77mtr

**EWP Restrictions**

Theatre Technical Staff use only

EWP Induction

**Ladders**

1 x 1.8m Blue Gorilla Fibreglass A - Frame

1 x 3.6m Blue Bailey Fibreglass A - Frame

1 x 3.9m – 6.6m Green Bailey Fibreglass Upright Extension

1 x 2.3m Red Redback Fibreglass A – Frame

1 x 2.4m – 3.9m Aluminium Gorilla Extension Ladder

Staging Units:

**8 x Pro Stage** steel inter-lockable rostra with carpet tops 2000 x 1000 x 400mm

Safety Curtain:

Safety Curtain installed **YES**

Safety Curtain must be unobstructed at all times **YES**

Thickness of Fire Curtain **200mm**

Distance from setting line Fire Curtain is the setting line & distance to DS edge is 200mm

**Note:** Measurement is to the downstage edge of the Fire Curtain.

**Additional Requirements**

Curtain must remain in the down position whilst venue not in use.

### Loading Dock:

#### **Access**

Truck access via car park off Neville Place or Benerembah St between Theatre and TAFE Institute

Loading Dock Height      Loading dock situated on sloping road, heights are as follows



610mm

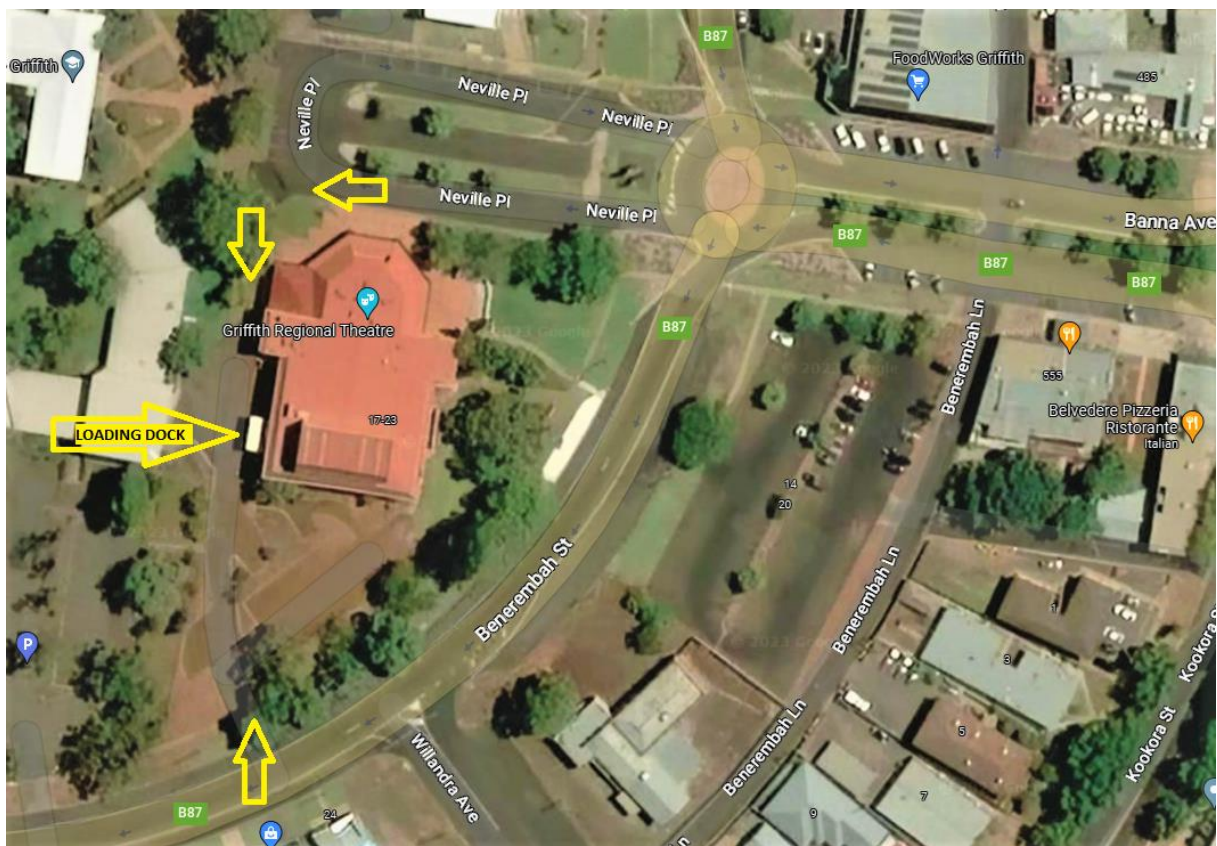
910mm Circled Area

810mm

Door Dimensions      3500mm High  
3800mm Wide

#### **Restrictions / Obstructions**

Semi trailers must reverse up to loading dock from Benerembah St Entrance to utilise the 910mm height of loading dock. Smaller trucks may back up to dock from either entrance and utilise the 810mm loading height. Vans and Utes may utilise whichever suits their requirements



### Additional Rigging Notes and Equipment

Available Rigging points from grid with load limits and good access

**4 x 100m RHS spreader bars** available in grid 1m long

**6 x 2.5m x 300 square box truss available**, Euro Truss. Base plates and top plates available to use truss as stage booms, eggs and pins available to use as straight 15m truss, however no slings or rigging is available at this time, hirer must provide, **additional hire costs involved**

**4 x 1 metre spreader bars** available and stored at grid level 90 x 90 RHS

### Staging Notes:

- All flown items must be rigged with rated equipment and is subject to approval
- Access to the stage galleries is from the OP side of stage upper level to dressing rooms and P side upstage vertical ladder (Restricted Access)
- Limited rigging gear available in house.
- Use of Flying System by In House Staff or Qualified Flyman after operational procedure given

**LIGHTING****Positions:**

**Stage LX Bars** Fixed flying positions

**FOH Bridge consists of one centralised Catwalk with rigging positions available on the upper and lower front bars.**

**FOH Bridge Upper Bar**

Setting Line to lighting bar **12 metres**  
 Usable bar width **2 x 5m either side of centre**  
 Notes **No Moving Heads to be rigged off this Bar**

**FOH Bridge Lower Bar**

Setting Line to lighting bar **11.5 metres**  
 Usable bar width **12 metres**  
 Notes **Large Moving Heads will not fit into position slot**

**FOH Boom/Perches (PS & OP)**

Setting Line to FOH Perch **10 metres**  
*Distances are to the highest downstage point of boom or perch.*  
 Maximum lanterns per perch **Maximum (4) ETC Source 4 zoom**  
 Notes **Access and Focus Limitations**

**Proscenium Arch Boom (PS & OP)**

1 Metre from proscenium, in line with orchestra pit.  
 Notes **4 circuits per boom**

**Control:**

Lighting desk **ETC Gio@5, 4 Universe, 2 Fader Wings, External Monitor**  
 Control channels **4096**  
 Signal output **DMX 512, 4 Universe**  
 Signal distribution **2 Streams from Control Room to Dimmer Room, from dimmer room can be distributed throughout Stage / LX Bars / Galleries and FOH Catwalk. DMX Nodes at dimmer racks and OP Fly Gallery**  
 Remote riggers available onstage **ETC Android App**

**Control: Additional**

Lighting desks **LSC Maxim XXL, 120 fader, Pat Pad Moving Light Control. Chamsys Quick Q30**



Dimmer Racks:

**Total Dimmers** **132**

**Dimmer Locations**

**Dimmer room located on PS stage level next to Stage Managers console**

2.4Kw Dimmer Racks **JANDS HP-12 (digital)**

Total dimmers @ 2.4kw per dimmer **120**

5Kw Dimmer Racks **JANDS HP- 6 (digital)**

Total dimmers @ 5kw per dimmer **12**

House Lights:

Independent control	<b>YES</b>
Control positions	<b>Control Room, Auditorium positions available</b>
Fade time adjustable	<b>Yes Manually / Timed. LED RGBAWL House Lamps, Wireless DMX Control through JANDS Stage CL Desk</b>

Stage Lighting:**Profiles**

Make	Model	Angle	Detail / Accessories	Watt	Total
ETC	Source4 Zoom	15-30 deg		750w	<b>24</b>
ETC	Source4 Zoom	25-50 deg		750w	<b>24</b>
			B size Gobo holder to suit		<b>10</b>
			A size Gobo holder to suit		<b>10</b>
			Iris to suit		<b>12</b>

**Fresnel's**

Make	Model	Detail / Accessories	Watt	Total
ETC	Source4 ParNel	Barndoors to suit	750w	<b>40</b>

**Mr16/Birdies**

Make	Model	Detail / Accessories	Watt	Total
		240v MR16 Chrome mini Par	50w	<b>8</b>

**Par Cans**

Make	Model	Angle	Detail / Accessories	Watt	Total
Kupo	Par64 110v		MFL / NSP / Lamps Available	1000W	<b>24</b>
ETC	Source4 Par	WFL/MFL/ NSP/VNS P	Lens interchange Kit available for all lamps	750w	<b>24</b>

**Wash/CYC**

Make	Model	Detail / Accessories	Watt	Total
Selecon	Cyc Units	4 cells per unit	1000w	<b>5</b>
Selecon	Ground Units	4 cells per unit	1000w	<b>5</b>
Pro Shop	HO LED Bar	RGB 3 to 12 Channel		<b>14</b>
Prolights	ECL CYC100	LED Ground or bar mountable		<b>5</b>

**Movers and LED**

Make	Model	Control Channels	Detail / Accessories	Watt	Total
GLP	YPOC 575 Profile	16	Additional Hire Charge Applies	MSR 575	<b>4</b>
Chauvet	Rogue 1 Spot	16	Additional Hire Charge	LED	<b>8</b>
Chauvet	Rogue 2 Wash	15 / 22	Additional Hire Charge	LED	<b>8</b>
Chauvet	Rogue 1 FXB	18 / 25	Additional Hire Charge	LED	<b>4</b>
Chauvet	Par Quad 18	6 / 10	Included in Hire Charge	LED	<b>20</b>
Silver Star	Pluto 350	25	Additional Hire Charge	LED	<b>8</b>
EK Lights	R3 Wash	16 / 20	Additional Hire Charge	LED	<b>10</b>

Follow spots:

Make	Model	Angle	Detail / Accessories	Watt	Total
Silver Star	Tracer	10 - 20	LED 5600K 16 BIT Dimming 6-way colour changer	250w	2

Additional Lighting and Effects:

Item	Make	Model	Detail / Accessories	Watt	Total
Mirror Ball		10 inch	Motor		1
Mirror Ball		30 inch	Motor		1
Blinders	Kupo	4 WAY	DMX controlled	2600	2
Blinders	China	2 WAY	LED DMX Controlled 2 CH	100	4
UV	Chauvet	Slim Bank	Barn Doors	18	2
Fazer	Antari	350Z	DMX controlled		1
Smoke	Chauvet	Geyser RGB	DMX controlled		1
Rotor Sphere	Chauvet	Q3	3 Chanel DMX	LED	1

Patching:

Location	Quantity	Numbering (PS to OP)	Detail / Accessories
FOH Bridge	78	1 - 78	
FOH Perch	18	79 - 96	
Proscenium	8	Pros Looms	4 Circuits per boom
LX1	36	133 - 168	
LX2	28	169 - 196	
LX3	20	197 - 216	
LX4	12	217 - 228	
LX5	12	229 - 240	
Floor Traps	18	97 - 114	
Fly Galleries	18	115 - 132	

Power:**3 Phase Outlets**

- 12 @ prompt side dimmer room for Dimmer use only
- 1 @ prompt side dimmer room 40 amp House and Cleaning Lights
- 2 x 32 amp lighting supply prompt side
- 1 x 40 amp audio supply prompt side

Cabling:

**240v Extension Cable**

The theatre has a good stock of extension leads to accommodate the venue's standard lighting rig and additional lighting requirements

**Looms**

- (5) 10m 4-way Weilands
- (5) 15m 4-way Weilands
- (5) 20m 4-way Weilands
- (5) 25m 4-way Weilands

**3 phase Extensions**

- (1) Portable 3 phase 240v distribution board and 12 Ch 2.4kw Dimmer Rack in road case
- (3) x 20m 3 phase extension cable
- (1) 1 x 32 amp to 3 x 15-amp 1 x 20-amp outlets

Lighting Notes:

- Access to FOH position given after site Safety Induction
- Access to FOH Perch positions restricted to 3.5m above Auditorium floor location level
- All incoming electrical lighting and associated equipment ***must have current Test Tag present***

Control Positions:

**Control Room**

Rear left of centre of stalls. Dedicated position, no seats pulled.

**Auditorium**

Located at centre of row N (rear of stalls)

Total seat allocation    **4 to 6 Seats pulled**

**Other**

Prompt or OP side of stage, mixer to be patched through main console

Control & Amplification:

**Primary Mixers**

Allen & Heath SQ7, AR 24/12 Stage Box

Soundcraft Si Expression 3, 32 Channel Stage Box. Madi USB Card

**Amplifiers**

5 x L'Acoustics LA4X

1 x Crown DCI 2/1250

**EQ**

(4) dbx 2231 Graphic Equalisers for Foldback in On Stage Rack

**FX**

Inbuilt Effects on Desks

**Compression / Limiter / Gates**

Inbuilt Dynamics on Desks

Speakers:

**FOH Speakers**

Left Array:    3 x L'Acoustics KS21i Subs in Cardioid arrangement

3 x L'Acoustics A15i focus and wide speaker boxes

Right Array: 3 x L'Acoustics KS21i Subs in Cardioid arrangement

3 x L'Acoustics A15i focus and wide speaker boxes

Centre:        3 x L'Acoustics A15i focus and wide speaker boxes

Front Fill:    9 x JBL Control 25 across front of stage

**Foldback**

(4) HK Audio D.A.R.T 2 Way Powered Speaker 310w

(6) RCF HD 12A MK 4 2 Way Powered 1400w

(2) JBL Control 29 AV 2 Way Speaker 300w (Flown)

Playback:

Item	Make	Model	Detail	Total
CD / Tape Player	Denon	T625	Combo Unit FOH Rack	2
CD / mp3 Player	Numark	MP103 USB	OP Stage Rack	1
CD / mp3 Player	Numark	MP103 USB	FOH Rack	1
CD / Tape Player	Denon	T625	Foyer Music	1
CD Player	Sony	CDP-297	Spare	1

Microphones:

CABLE MICS	Model	Detail / Accessories	Use	Total
AKG	D880	Super Cardioid Dynamic	Vocal	3
Sennheiser	e835	Cardioid	Vocal	3
Shure	SM58	Cardioid	Vocal	2
Shure	SM 58 Beta	Super Cardioid Dynamic	Vocal	2
Shure	SM57	Cardioid Dynamic	Instrument	4
Shure	MX-418C	Condenser Shotgun	Vocal/Choir	4
Shure	SM94	Condenser Mics	Stage/Vocal Instruments	4
Shure	MX-412C	Lecturn Mic	Vocal	3
<b>RADIO MICS</b>				
Shure	Beta58/Shure 93	Radio Hand Held Mics/Lapel Mics	Vocal	2
Sennheiser	e935	ew100 Receivers G3	Vocal	6
Sennheiser	e935	ew100 Receivers G4	Vocal	2
Headset		Beige Headsets/Sennheiser SK100 G3 body pack	Vocal	6
		G4 body Pack	Vocal	2

Accessories:

Item	Model	Detail / Accessories	Total
Microphone Stands	Round Base	Upright	6
Microphone Stands	Tri-leg	Upright	4
Microphone Stands	Tri-leg	Boom Arm	8
Microphone Stands	Round Base	Table Stands	2
Speaker Stands	On-Stage	Push Up	4
Music Stands		Adjustable height	8
D.I Boxes	Behringer Ultra100	Battery/Phantom power	1
D.I Boxes	DBX	Active	1
D.I Boxes	Radial	Active	3
D.I Boxes	Radial	Stereo	1
D.I Boxes	Radial	Passive	3

Line Patching:

Location	Quantity	Numbering	Detail
Stage Box A US/OP	8	1 – 6 A & B	6 sends ,2 returns DMX 1 and 2
Stage Box B US/P	8	1 – 6 A & B	6 sends ,2 returns
Stage Box C DS/OP	8	1 – 6 A & B	6 sends, 2 returns DMX 1 and 2 Vision Tie Lines
Stage Box D Orch Pit	8	1 – 6 A & B	6 sends, 2 returns Vision Tie Lines
Stage Box E DS/P	8	1 – 6 A & B	6 sends, 2 returns Vision Tie Lines, HDMI Input to Control Room 2 x HDMI from Control Room 1 x CAT 6 To Control Room HDbaseT
Stage Left DS	2	1 - 2	CAT 5 to Control Room
Stage Right DS	2	3 - 4	CAT 5 to Control Room

### Speaker Patching:

Location	Quantity	Numbering	Detail
FOH			Permanently Patched No additional outlets
5 x Stage Boxes	10	R1 & R2	Patch through Stage Box Return Lines (line level)
Bitree Patch Panel		Signal Patch	Control Room Rack

### Cabling:

#### **Audio Cable**

The Theatre has a good stock of cable to accommodate the venue's equipment and the majority of incoming equipment.

#### **Multicore**

- (1) 50m, To Stage, 30 input lines, 2 On Stage Rack Inputs (CD/MP3),
- (1) 50m, To Stage 12 x AUX Sends, 1 x Spare Line,
- (1) A Loom 10m FOH for Auditorium mix position, Left, Right, Centre, Subs
- (1) B Loom 10m FOH for Auditorium mix position, Subs stereo, front fill, stage fill
- ALL THESE MULTICORES ARE PERMANENTLY INSTALLED*
- (5) Whirlwind 10m stage multicores, 6 sends, 2 returns (extensions to stage boxes)
- (4) CAT5 runs to both sides of stage from control room, 2 each side.

### Audio Notes:

- Dedicated power supply for audio
- 125 amp per Phase Incoming Supply
- Distributed Audio Outlets Coded Red 240v
- RCD protected and Lightning & Surge protected
- 3 Phase plus Neutral 40-amp supply Stage Left
- FOH Speakers permanently mounted above Proscenium
- Stage In-fill speakers permanently mounted across front of stage
- Control Position not recommended for live mixing, recommend using auditorium position with removal of 6 seats to accommodate console/racks and operator
- No Access granted to processors



**AUDIO VISUAL****Projection Room:**

Located in a dedicated room beside the FOH control position.

**Projectors:**

Type	Model	Detail / Accessories	Total
EPSON Laser Projector	EB-L1755U	15000 lumens, 3 LCD & zoom lens, PERMANENT MOUNT IN PROJECTION ROOM, CANNOT BE MOVED.	1
NEC LCD Projector	GT5000	5000 lumens & zoom lens,	1
EPSON Data Projector		3200 lumens & zoom lens, portable	1
Overhead Projector			1

**Screens:****Projection Screen**

Screen Technics front projection cinema screen permanently rigged from fly line 7

Screen dimensions 6000mm x 3400mm

**Additional Screens**

NIL

Screen dimensions NIL

**AV Playback Equipment:**

Item	Model	Detail / Accessories	Total
Roland Matrix Switcher	XS-84H	Rack Mounted	1
Sony Blu Ray	BDP-S380	Rack Mounted	1
Denon DVD	DVD1400	Single multi region player Rack Mounted	1
TEAC HD TV	HDB849	Rack Mounted	1
DELL Media PC	DELL		1
Panasonic VHS/DVD	DMR-EZ48V	Combo Player/Recorder Rack Mounted	1

**Projector Rigging Points:**

- (1) EPSON Projector is permanently mounted and cannot be re-located
- (1) EPSON Portable Projector has a mounting assembly and can be rigged from any horizontal Fly Bar
- (1) NEC Projector is portable but surface or desk mounted

**Cabling:**

The Theatre has a good stock of HDMI, VGA, Coaxial, RCA and Cat5 cable to accommodate the venue's own equipment.

Audio Visual Notes:

- Screen Technics Projection Screen 6m x 3.4m Screen (16:9 or 4:3 formats) Fly Bar 7
- Solid Edge Border and Black Drapery Masking
- Multiple inputs
- Cinema Image size of 6m x 3.4m (widescreen)
- Discreet Left/ Right/ Centre/ Subs Audio (DVD Only)
- Roland XS-84H Matrix Switcher
- Philips LCD Preview Monitor
- HDMI Input from stage left (prompt) to Control Room
- HDBaseT Input/output from stage left (prompt) to Control Room
- 2 x HDMI Outputs from Control Room to stage left (prompt)
- 6 x Video Tielines from Stage to Control Room
- 4 x CAT5 runs to either side of stage, 2 each side.

## **BACKSTAGE**

### **Communications:**

#### **Stage Managers Desk**

Stage Managers desk is located in prompt corner. The desk can be moved within this area and is fitted with a light, talkback system, LCD monitor and paging mic.

#### **Talkback**

Master Unit                      JANDS system running two common loops. Each loop can carry Up to 6 sub stations.

Total sub stations        **7**

Total headsets            **7**

Radio Units In-house    **3 Green Go**

Talkback patching located at: **Control Room (Master Unit)**

**Stage Managers Desk**

**OP Stage**

**Fly Rail**

**FOH Bridge Followspots (2)**

#### **Paging / Show relay**

Paging to the dressing rooms, Burley Griffin Room and Foyer is available from the Stage Managers desk or Control Room. Show relay is distributed to all dressing rooms and can be sent to Foyer and Burley Griffin Room. CCTV of Stage distributed to prompt and OP Corner also to foyer LCD screen, all dressing rooms and Burley Griffin Room.

#### **Stage Relay Monitor**

Yes, and to all Dressing Rooms, Foyer and Burley Griffin Room

#### **Q Light System**

In house Q light system available        **No**

Number of units                                **Nil**

Dressing Rooms:

Dressing Room	Capacity	Toilets	Shower	Details
Dressing Room 1	8	1	1	Stage Level, Disabled shower / toilet, Fridge, Kitchenette, Microwave, Kettle, Show relay monitor, Costume racks
Dressing Room 2	4	1	3	Stage Level, Disabled shower / toilet, Fridge, Kitchenette, Microwave, Kettle, Show relay monitor, Costume racks
Dressing Room 3	8	1	1	Upper Level, Fridge, Microwave, Kettle, Show relay monitor, Costume racks
Dressing Room 4	12	1	1	Upper Level, Fridge, Kitchenette, Microwave, Kettle, Show relay monitor, Costume racks

Laundry / Wardrobe:

Washing Machines	1
Dryers	1
Drying rooms	Racks in Laundry
Iron / ironing board	1
Clothes racks	Available
Steamer	Available

**Production Facilities:**

**Production Desk**

Production desk can be set up at the rear of the Auditorium only. Table accommodates 3 people and can have lighting, DMX for a lighting console, talkback, and shout microphone.

**Production Office**

Production office available via Technical Managers office

**Phone**

Access to a phone in Technical Managers office.

**Fax**

Yes, Located in Administration Office

**Access to Wi-Fi**

Password protected on arrangement with Technical Management.

**Greenroom: Utilisation of Dressing Room 4 or Burley Griffin Room**

Tea / Coffee facilities	Available upon Request
Fridge / freezer	Located in Dressing Rooms
Microwave	Located in Dressing Rooms
Running water	All Dressing Rooms

**Stage Door:**

**Access**

Stage Door is located on the Eastern side adjacent to Benerembah St. Access during bump-in / out will be controlled by the duty technician. During performance periods a staff member will be allocated to control access 60 minutes prior to a performance to 60mins after the completion of the show.

**ADDITIONAL FACILITIES & INFORMATION**

**Orchestral:**

Yamaha C7 Concert Grand Piano. Relocation and tuning to be arranged prior to use  
30 padded black seats with backrest

**Rehearsal Space:**

Burley Griffin Room, 10m x 11m usable space, carpet covered concrete floor  
Additional spaces available throughout local area, contact Theatre Coordinator

**Additional Equipment:**

Additional lighting and sound equipment can be sourced by our local Events Companies.  
If you wish to use any additional equipment a contact phone number can be provided.

### Burley Griffin Room:

**Maximum capacity of 150 people standing, 120 seated concert style or 80 seated with table of 4 - 6 cabaret style. Bar and kitchen facilities available. The Following equipment is available to facilitate a performance, conference or event. It is a low ceiling room with minor lighting rigging positions available.**

#### **AUDIO**

- Yamaha O1V Digital Console  
16 Channel 4 Aux Sends Inbuilt EQ and Effects
- 2 Yamaha MS400 powered speakers  
400 watt each 2-way Sub & Horn
- 2 JBL 4628B Cabaret passive speakers used as SUBS  
200 watt each
- 1 Quest Amp 350 x 350 watts RMS
- 1 dbx 231s 31 Band Graphic EQ 2 Channel
- 1 Yamaha 31 Band Graphic EQ 2 Channel used for subs
- 1 Sony Single Disk CD Player

***Foldback Speakers, Mic leads, DI Boxes, Stands and Microphones available***

#### **LIGHTING**

- 1 ETC Smart Fade 1248 or LSC Maxim MP 24/48 Ch, PATPAD control and monitor
- 1 JANDS FP12 Dimmer Rack, 12 Channel 2.4kw,
- 1 x FOH Fixed lighting bar 8 circuit
- 4 x 350watt Par 56 Chrome
- 2 X 650watt 16/30 Profiles
- 2 x Pro Shop HO LED RGB Strip Back light
- 2 x Pro Shop HO LED RGB Strip Side Light

***Assortment of power leads and colour gel available***

#### **AUDIO VISUAL**

- 1 Data Projector LCD 3200 lumens
- 1 Overhead Projector
- 1 Projection Screen
- 1 DVD player
- 1 100inch Hi Sense LED screen and PC on movable stand with Internet availability

#### **OTHER**

- Kawai Upright Piano
- (12) 3–6-person trestle tables
- (20) 4-person square tables
- (120) padded purple cloth chairs with back rests

***Additional P.A equipment is available through local Events Companies contact.***

**VENUE:**

**Venue Contacts:**

Venue Address                      **1 Neville Place Griffith NSW 2680**

Venue Postal Address           **PO Box 2283 Griffith NSW 2680**

**Staff Contacts:**

**Technical Operations**

**Coordinator**

**John Matkovic**

Mobile                                0414 930 704

Email Address                   [john.matkovic@griffith.nsw.gov.au](mailto:john.matkovic@griffith.nsw.gov.au)

Phone Number                   02 6962 8454

**Grants and Administration**

**Officer**

**Margaret Andreazza**

Phone Number                   02 6962 8469

Email Address                   [margaret.andreazza@griffith.nsw.gov.au](mailto:margaret.andreazza@griffith.nsw.gov.au)

Fax Number                       02 6962 8448

**Box Office**

**Veronica Armanini**

Phone Number                   02 6962 8444

Email Address                   [theatre@griffith.nsw.gov.au](mailto:theatre@griffith.nsw.gov.au)

Fax Number                       02 6962 8448

**Marketing and Education**

**Officer**

**Lea Ligakis**

Phone Number                   02 6962 8462

Email Address                   [lea.ligakis@griffith.nsw.gov.au](mailto:lea.ligakis@griffith.nsw.gov.au)

Fax Number                       02 6962 8448

**Theatre Manager**

**Margaret Andreazza**

Phone Number                   6962 8450

Fax Number                       02 6962 8448

Email Address                   [margaret.andreazza@griffith.nsw.gov.au](mailto:margaret.andreazza@griffith.nsw.gov.au)

**Theatre Technician**

**John Bortolazzo**

Phone Number                   02 6962 8455

Email Address                   [john.bortolazzo@griffith.nsw.gov.au](mailto:john.bortolazzo@griffith.nsw.gov.au)

**Venue Plans:**

**Venue Plan Available**

YES, a PDF or DWG file emailed upon request.

**Venue Section Available**

YES, a PDF or DWG file emailed upon request

Plans also available on the APACA website: [www.apaca.com.au](http://www.apaca.com.au)

Venue Information:

The Griffith Regional Theatre is the entertainment heart of the Western Riverina.

Comprising a 523-seat auditorium, a 120-seat flexible function room, a fully licensed bar and a commercial kitchen the Griffith Regional Theatre is a venue suitable for professional touring performing arts companies, community groups, cabarets, functions, conferences and workshops.

The Griffith Regional Theatre programs a subscription season each year featuring a diverse range of the performing arts including drama, opera, music and dance.

A popular attraction at Griffith regional theatre is a soft sculptured artistic curtain created by over 300 local residents in 1987. The curtain depicts the Griffith panorama.

With a newly renovated foyer, toilet facilities, dressing rooms, carpets and seating, outdoor performance space plus state-of-the-art lighting, sound and projection systems along with Professional Management, Front of House and Technical staff, a steady 5-year upgrade period has made the Griffith Regional Theatre a delightfully warm and intimate venue for both audiences and performers alike.